

Gower College Swansea

Accessible Library Services

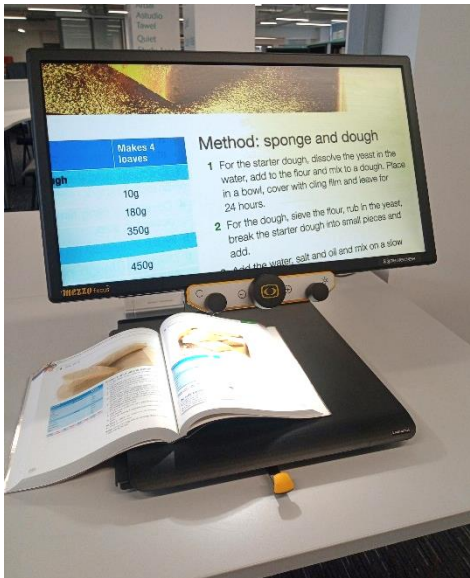


Our libraries are here to help and support every learner at Gower College Swansea.

We know that each person has different things that they need from the library and from library staff, and we always do our best to make sure that we meet your learning needs.

The following pages provide examples of the kinds of accessible services we have to support you.





Screen Reader (Tycoch)

Allows you to magnify text, change page colour, and light pages up.



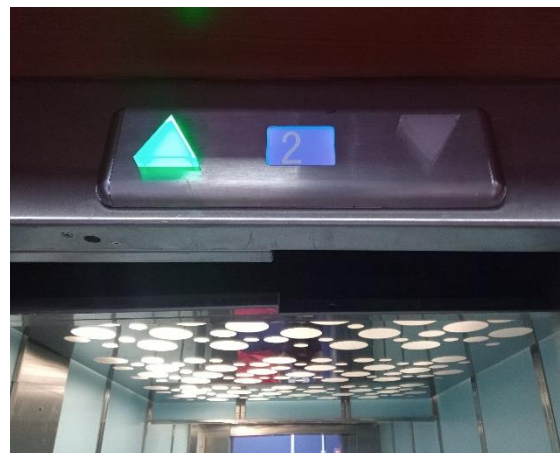
Coloured Overlays

You can place these over the top of pages to change their colour for reading.



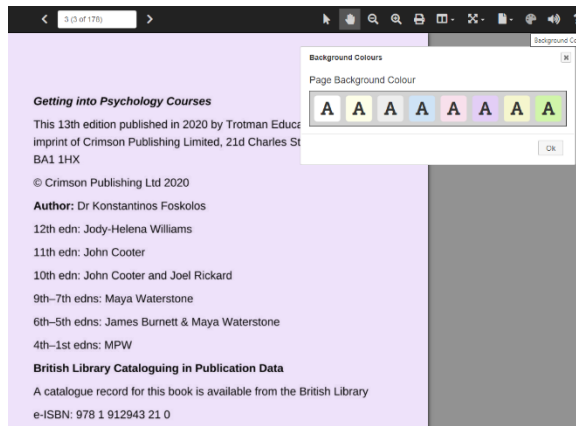
Height Adjustable Desks

For wheel chair users or those who need to stand up whilst working at a PC.



Lift Access

Our libraries can be accessed by the use of ramps and lifts.



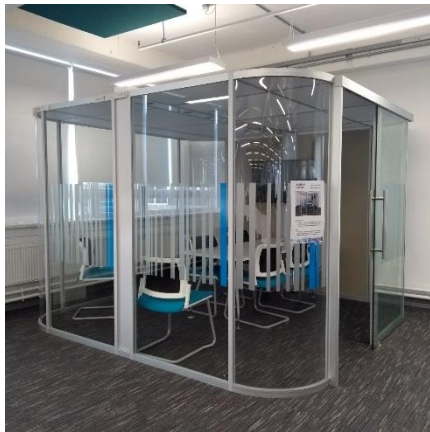
eReading

Our software for reading eBooks and eJournals online enables you to change font size and page colour.



1-to-1 Support

Every library has Assistants and Advisors to help and provide study support.



Quiet Learning Spaces

Many of our libraries have spaces where learners can work individually and quietly.



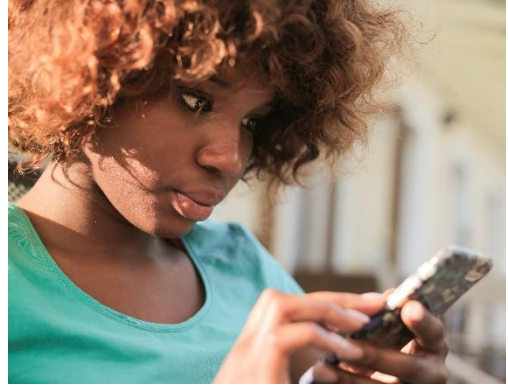
Books for Various Reading Levels

We have books suitable for readers at different reading levels, for those improving their literacy and English language skills.



Request Books Across Campuses

You can request for books stored at other campus libraries to be delivered to one closer to you.



Speak to Staff

You can speak to staff in various ways: in-person, via social media, email, over the phone, or through the use of anonymous feedback forms.

We would love to hear any feedback you have about,

- what you like about our libraries
- what we could do better
- what equipment or books would be helpful to have in the libraries

Online Feedback form:

<https://forms.office.com/r/xdzaF3NQF1>

Email: library@gcs.ac.uk

Phone: Tycoch Main (01792) 284133

Gorseinon (01792) 890731

Llwyn Y Bryn (01792) 284335